



## 15 Unity Park

, Shotts, ML7 4AN

**Fixed asking price £165,000**

NEW TO THE MARKET!!

SEMI DETACHED BUNGALOW

Rarely available and cul-de-sac sited, situated in a popular residential area within Shotts, minutes walk to the Town Centre and all amenities

The accommodation comprises entrance vestibule, reception hall, large lounge semi open plan to dining room, fitted kitchen, 2 double bedrooms and wet room.

The property further benefits from gas central heating, double glazing, front and large rear garden with driveway to side

Unity Park is ideally positioned close to the centre of Shotts, which provides a wide range of amenities including transport services, health and leisure facilities, primary and secondary schooling. Providing quick and easy access for commuting both to Glasgow and Edinburgh via M8 motorway and transport services including rail.

EPC D

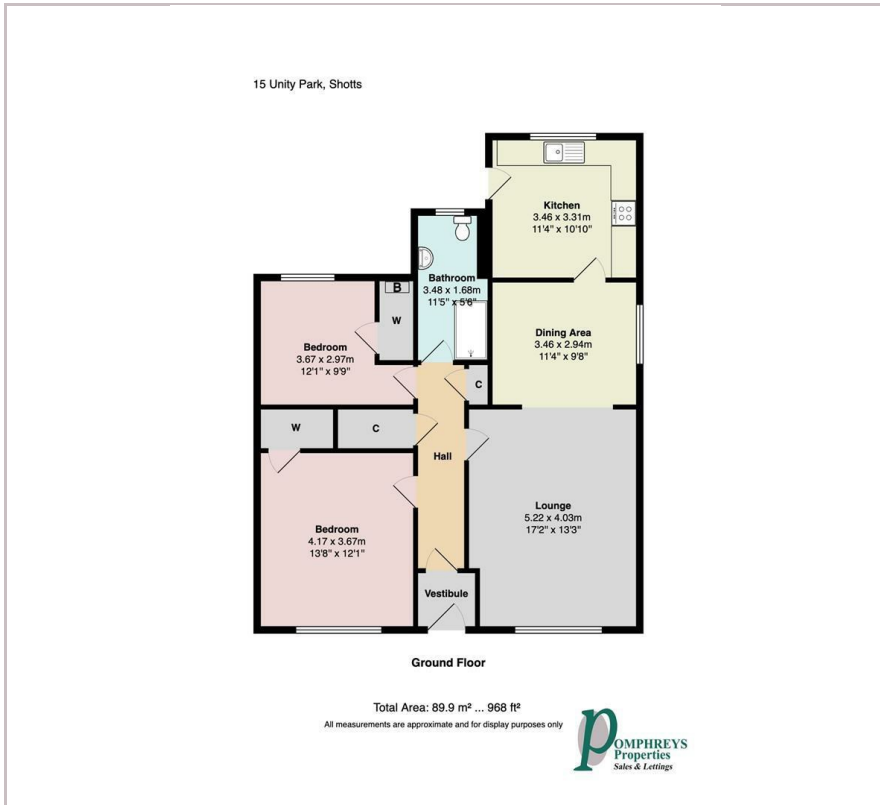
### Viewing

Please contact our Pomphreys Properties Ltd Office on 01698373365 if you wish to arrange a viewing appointment for this property or require further information.

- Lovely Semi Detached Bungalow
- Two Bedrooms
- Close to Town Centre
- Cul-de-sac sited
- Lounge Semi Open Plan to Dining Room
- Large Rear Garden
- Driveway



## Floor Plan



## Area Map



## Energy Efficiency Graph



These particulars, whilst believed to be accurate are set out as a general outline only for guidance and do not constitute any part of an offer or contract. Intending purchasers should not rely on them as statements of representation of fact, but must satisfy themselves by inspection or otherwise as to their accuracy. No person in this firm's employment has the authority to make or give any representation or warranty in respect of the property.